



Tour Study Guide

2026 - 2027

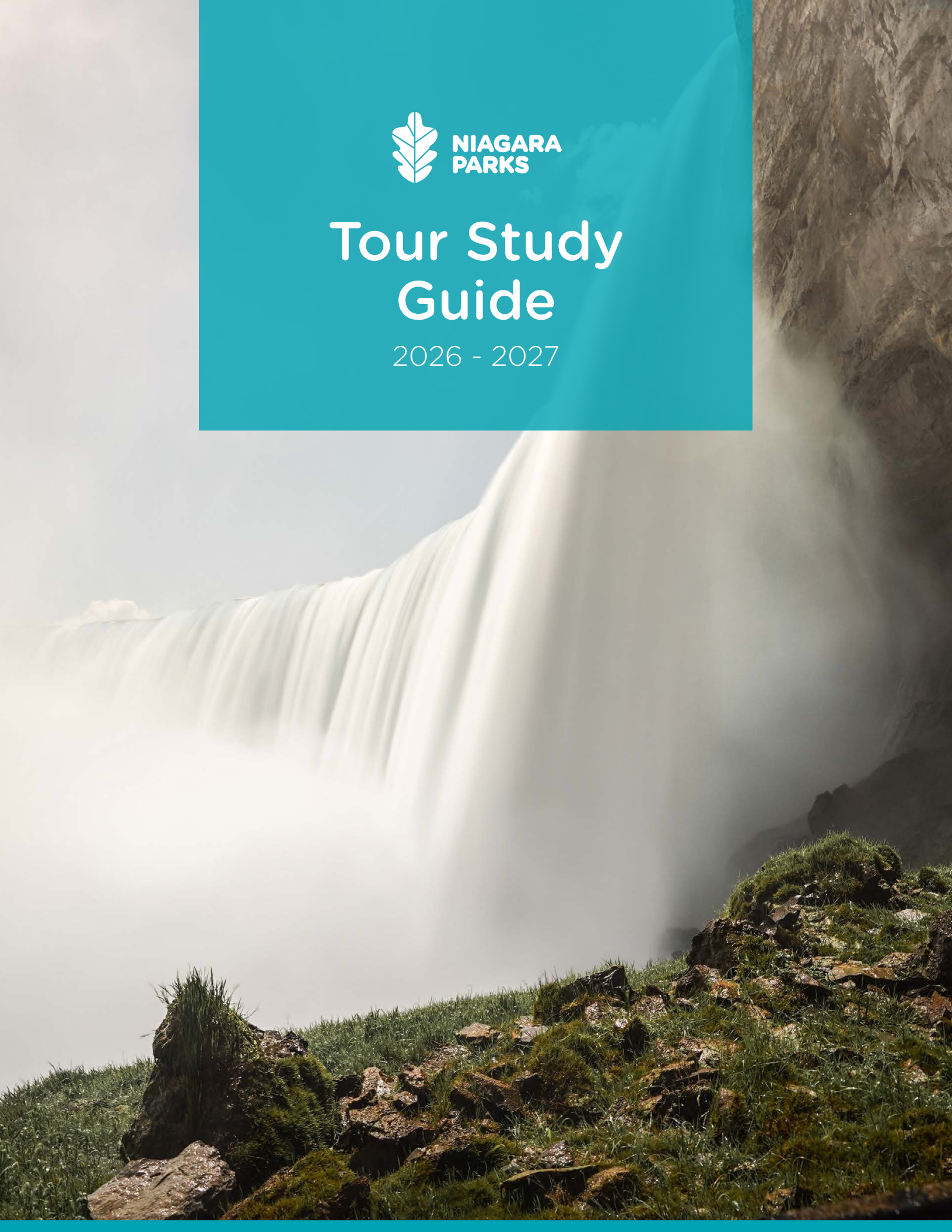


TABLE OF CONTENTS

Introduction	3
Facts & Figures	5
Challenging the Falls	10
Hydroelectric Power Stations in Niagara Parks	12
Nature Areas	14
Heritage Sites	16
Attractions	19
Gardens	24
Transportation	27
Dining in Niagara Parks	29
Niagara Parks Golf	31
Niagara Parks Entertainment	32
Accessibility at Niagara Parks	33
Tour Guides, Tour Vehicles & Group Tours	34
Famous Visitors, VIPs & Dignitaries	36
Emergency Services	37

INTRODUCTION

: MISSION & VISION

Niagara Parks is a self-financed agency of the Ontario Ministry of Heritage, Sport, Tourism and Culture Industries founded in 1885. Stretching 56 kilometres along the Niagara River, from Lake Erie to Lake Ontario, Niagara Parks features natural attractions, Feast On certified restaurants, pristine championship golf courses, restored heritage sites and world-renowned gardens and green spaces.

Originally called the Commissioners for the Queen Victoria Niagara Falls Park, Niagara Parks initially only managed land next to the Canadian Horseshoe Falls. It was renamed the Niagara Parks Commission in 1927 and

today this public park system maintains over 1,325 hectares (3,274 acres) of parkland. Niagara Parks operates like a city within a city with its own police services, road maintenance, waste collection, public transportation system and other services. During the height of the tourist season, Niagara Parks employs over 1,700 staff, including 300 full-time and 1,400 seasonal employees.

Niagara Parks is governed by a provincially appointed board of 12 commissioners that meet on a monthly basis. Four of these appointees are nominated from the local municipalities of Niagara-on-the-Lake, Fort Erie, Niagara Falls and the Region of Niagara.

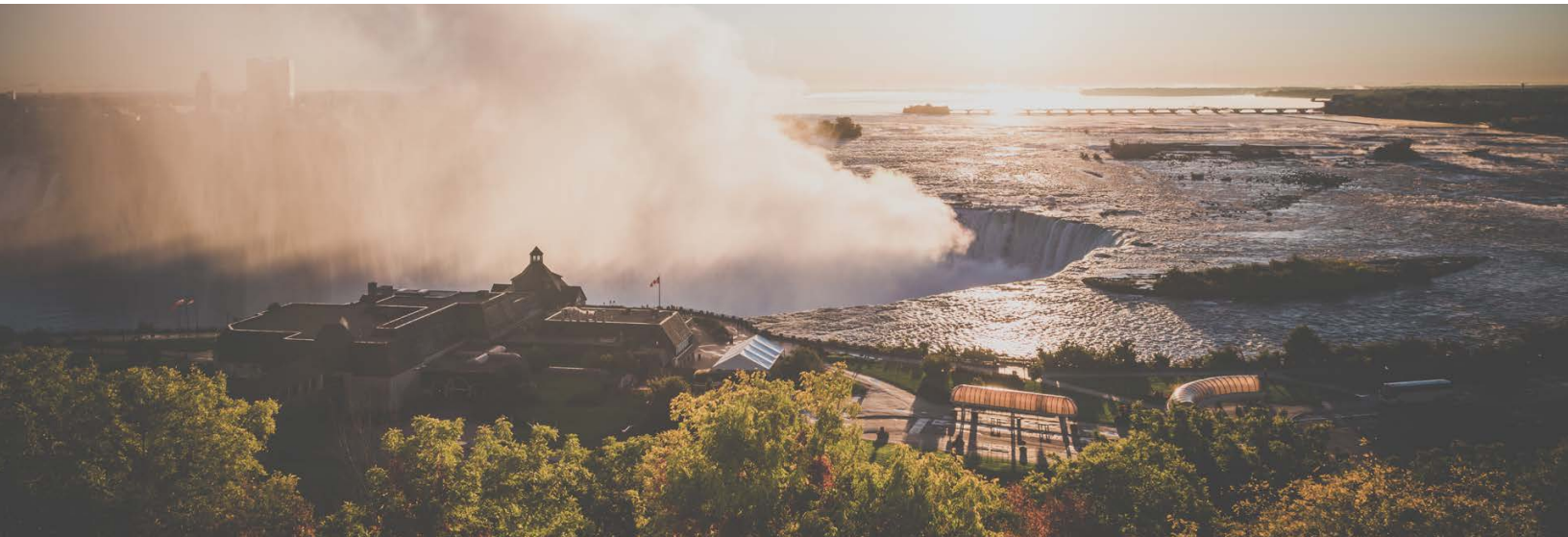
THE NIAGARA PARKS MISSION

“Preserving and promoting the natural and cultural heritage along the Niagara River corridor.”

: THE NIAGARA PARKS VISION

By 2028, Ontario’s Niagara Parks will be:

- An innovative example of sustainability as the environmental and cultural stewards of the Niagara River corridor
- A welcoming, accessible and inspiring place offering world-class natural, historical, and authentic experiences
- A source of national pride and identity
- One of the most spectacular parks in the world



: INCOME GENERATION

Niagara Parks generates income from the operation of its own attractions, restaurants, retail shops, parking lots, heritage sites and golf courses. Every dollar spent within Niagara Parks helps preserve the nature and heritage of the falls and the Niagara River corridor. In addition to day-to-day operations, Niagara Parks' revenue also supports a number of activities and facilities that are FREE to the public, including:

- Floral displays throughout the park, including the Botanical Gardens, Centennial Lilac Gardens, the Floral Clock and Oakes Garden Theatre
- Regular falls fireworks and illuminations
- Dufferin Islands Nature Area
- Hundreds of hectares of lawn and shade trees, playgrounds and park benches
- Boat launching areas
- Maintenance of the Niagara Parkway including benches to relax and enjoy the view or picnic along the route
- The Niagara River Recreation Trail for jogging, biking, walking or wheelchairs
- Over 100 historic plaques and monuments, highlighting events and persons of local and national importance

FACTS & FIGURES

: NIAGARA RIVER CORRIDOR

The Niagara River corridor is a 56-kilometre stretch full of hidden gems waiting to be discovered. Flowing from Lake Erie to Lake Ontario, the Niagara River is technically a strait; that is, a narrow waterway connecting two large bodies of water. The elevation difference between Lake Erie and Lake Ontario is approximately 99 metres (326 feet) with half of the drop occurring at the Horseshoe Falls. Water entering the Niagara River represents about 20 per cent of the world's fresh water and comes from the Upper Great Lakes drainage basin: Lakes Superior, Huron, Michigan and Erie.

- The Niagara River has numerous environmental designations, such as the globally significant “Important Bird Area”
- The Canadian Horseshoe Falls measure 57 metres (188 feet) high
- The American Falls range from 21 to 34 metres (70 to 110 feet) high
- The Niagara Gorge extends north from the falls for 11 kilometres (7 miles) downstream to the foot of the escarpment at Queenston
- Over 169,000 cubic metres (six million cubic feet) of water go over the brink of the Horseshoe Falls every minute during peak daytime hours, enough to fill one million bathtubs
- The Horseshoe Falls are separated from the American Falls by Luna Island, the small Bridal Veil Falls and Goat Island
- The Bridal Veil Falls measure 24 metres (78 feet) high
- Niagara Falls is NOT the tallest, widest or fastest in the world - it also is NOT listed as one of the Seven Wonders of the World. It is the combination of height and volume that make it so unique

APPROXIMATE WIDTH OF EACH CREST

Canadian Horseshoe Falls	670 m (2,200 ft.)
American Falls	260m (850 ft.)
Bridal Veil Falls (located on the U.S. side)	15m (50 ft.)
Luna Island	30.5m (100 ft.)

NI-

AG-

ARA

MEANING OF THE WORD NIAGARA

The word “onguiaahra” (pronounced on-ge-a-ra) appears on maps as early as 1641. “Onguiaahra” and the later version “ongiara” are Indigenous words commonly interpreted as “the strait” or “great throat”; although “thunder of waters” is sometimes given.

: EROSION OF THE FALLS

It is estimated that it took 10,000 to 12,000 years for the falls to recede through the gorge, moving from their original position 11 kilometres (7 miles) downstream at the Queenston Heights Escarpment to their current location at Table Rock. In an effort to slow erosion of the falls, the Niagara River Water Diversion Treaty between Canada and the United States was established in 1950 to control the amount of water that could be diverted for industrial and power generating purposes. The treaty helped slow erosion of the falls to an estimated 30 centimetres (one foot) every ten years. Before 1950, the falls receded an estimated three to four feet per year.

: WHEN HAVE THE FALLS STOPPED?

MARCH 1848

High winds forced millions of tons of ice to clog the source of the river in March 1848. Locals walked and rode horses over the exposed basin until a shift allowed the weight of water to break through approximately 30 hours after it stopped.

SUMMER 1969

In an effort to clean and reshape the American Falls, the US Army Corps of Engineers built a dam at Goat Island to de-water the falls in 1969.

: ICE BOOM

Before 1964, ice would float each winter from Lake Erie along the Niagara River, seriously impeding power diversions and damaging shoreline installations and bridges. Beginning in 1964, the use of an ice boom at the source of the river has controlled potential damage caused by floating ice. The 2.7 km (1.7 mile) long boom is made of floating 30-foot long steel pontoons and is placed between the town of Fort Erie and the city of Buffalo to hold the ice back. The ice boom is usually installed when Lake Erie's water temperature drops to four degrees Celsius (39 degrees Fahrenheit), and uninstalled when ice covers less than 650 square kilometers (250 square miles) of the eastern end of Lake Erie.

: WHIRLPOOL

Classified as Class 6 rapids, flowing at 40 kilometres (25 miles) per hour, the Niagara Whirlpool is in the Niagara Gorge and created by water rushing through a sharp 90-degree turn. The diversion of water at night slows the flow of water enough to cease this effect. The whirlpool flows counterclockwise.

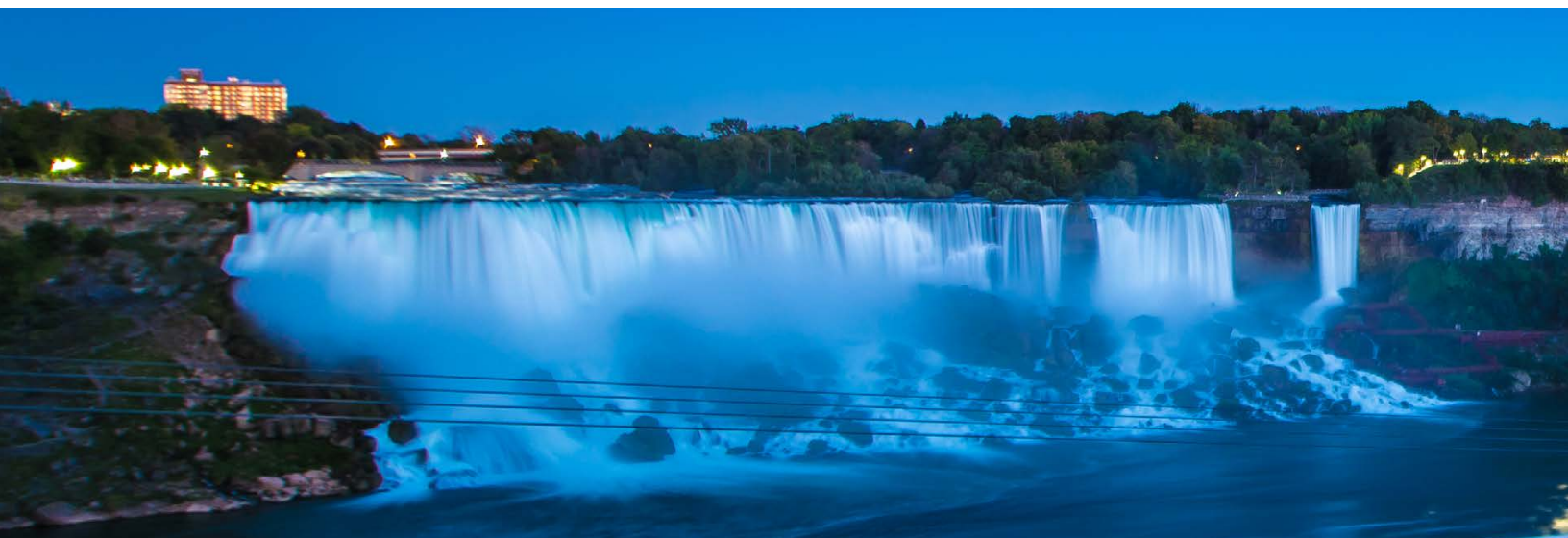
: ICE BRIDGE

With each winter that brings a majority of days with temperatures below zero, the phenomenon known as the ice bridge usually forms. Often in January, during a mild spell followed by a strong southwest wind, ice breaks up and travels down the Niagara River and over the falls. This wet ice is then forced up out of the water below the falls where it freezes into a huge mass, taking the appearance of a glacier; with the potential of building up to an incredible height of ten stories!

Beginning in the 1880s, it became a popular pastime to gather on the ice for entertainment and to enjoy refreshments served out of outdoor huts set up on the frozen surface. This continued until 1912, when an unfortunate mishap during a particularly mild spell led three people to their deaths, ending the era of public access onto the ice bridge.

: IRON SCOW RESCUE

The Iron Scow is a small wreckage that can be seen on the upper Niagara River. On August 6, 1918, a dumping scow broke loose from its towing tug about 1.6 km upriver with Gustav F. Lofberg and James H. Harris aboard. The men opened the barge's bottom dumping doors to let water in, grounding the barge on the river bottom where it has remained ever since. With the cooperation of the Niagara Parks Police, the Niagara Falls fire and police departments, the U.S. Coast Guard and recently returned WWI veteran, William 'Red' Hill Sr., the two men were successfully rescued the next day by breeches buoy on a line shot out from the roof of the adjacent Toronto Power Generating Station.

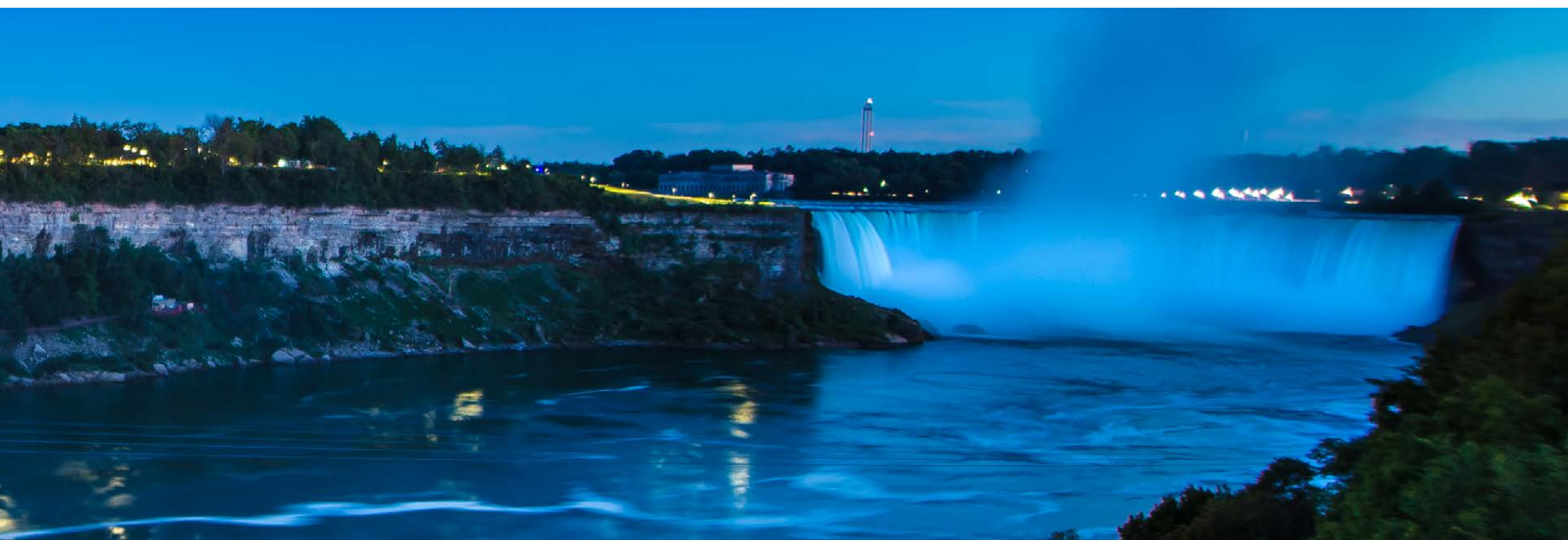


: RAINBOW BRIDGE

The Rainbow Bridge opened in 1941 approximately 168 metres (550 feet) downstream of the original site of the Upper Steel Arch (“Honeymoon Bridge”), which was pushed off its moorings and destroyed by a massive ice jam in 1938. Carillon Tower is located on the Canadian end of the Rainbow Bridge where recitals are performed on a regular basis during the summer and on special occasions.

: NIGHTLY ILLUMINATIONS

Every evening beginning at dusk, Niagara Falls is transformed into an incredible, multi-coloured water and light masterpiece. The breathtaking light effect is created by high-power, purpose designed and built multi-coloured LED lights located on the Illumination Tower, next to Queen Victoria Place; on the roof of Table Rock Centre, at the brink of the Canadian Horseshoe Falls; and deep in the Niagara Gorge, across from the American Falls. The nightly illuminations are paid for and controlled by the Niagara Falls Illumination Board which consists of representatives from the City of Niagara Falls, Ontario; the City of Niagara Falls, New York; Niagara Parks; New York State Parks, Recreations and Historic Preservations – Niagara Falls State Park; Ontario Power Generation; and the New York Power Authority. Special requests for colour illuminations can be made for charitable or non-profit purposes only.



CHALLENGING THE FALLS

⋮ STUNTING & STUNTERS

(PEOPLE WHO INTENTIONALLY RISKED THEIR LIVES)

GOING OVER THE FALLS

- Annie Edson Taylor was the first recorded person to go over the falls and survive
- David Munday and Steven Trotter went over twice and survived both attempts
- People have used barrels, inner tubes, kayaks and jet skis to go over the falls
- Five people have died of the 16 recorded trips over the falls
- 'Stunting' in this form carries a fine of \$10,000 CAD

TIGHTROPE WALKING ABOVE THE GORGE/RAPIDS

Jean-Francois Gravelet a.k.a "The Great Blondin" was the first to walk on a tightrope across the Niagara Gorge

- Summer 1859
- Made several crossings
- On a bicycle
- Blindfolded
- Carrying his manager
- During one crossing, he stopped halfway to cook an omelette

Maria Spelterini

- Crossed the gorge on a tightrope four times in 1876, including once blindfolded and once with her ankles and wrists shackled
- Only woman to tightrope walk over the gorge

TIGHTROPE WALKING OVER THE FALLS

Nik Wallenda, American acrobat

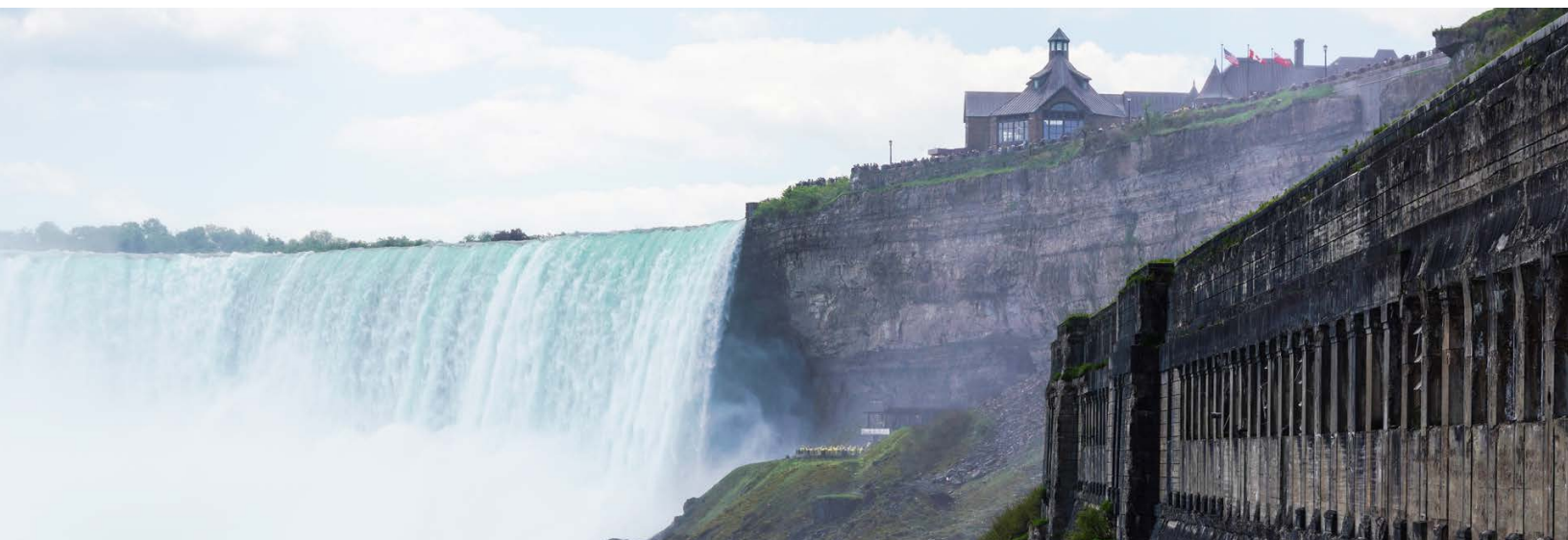
Summer 2012

- Broadcast on live television
- Had to wear a tether for safety/insurance purposes

Similar professionals may submit proposals once every 20 years for consideration

∴ 'THE MIRACLE OF NIAGARA'

In the summer of 1960, Jim Honeycutt took his co-workers' children, Deanne (17 years) and Roger Woodward (7 years), for a boat ride in the Upper Niagara River. A mechanical failure left the boat drifting toward the brink of the falls. The boat capsized throwing the three passengers into the water; the two children were wearing life jackets, but Jim was not. While Deanne was rescued in the shallows of the American side of the Horseshoe Falls, Roger and Jim were swept over the falls. Jim died in the accident and Roger was rescued by the Maid of the Mist tour boat. Roger Woodward is the first and only person known to have gone over the falls unintentionally and survived without a protective capsule or any equipment.



HYDROELECTRIC POWER STATIONS IN NIAGARA PARKS

: RETIRED GENERATING STATIONS

Niagara Parks owns and maintains three retired power generating stations that are currently undergoing assessments to be considered for refurbishment and reuse in the future.

CANADIAN NIAGARA POWER GENERATING STATION

- Located beside the Floral Showhouse
- Construction began in the early 1900s and was completed in 1924
- First powerhouse to produce hydroelectric power for transmission and sale outside of Niagara Falls, Canada
- Housed 11 generating units
- The discharge outlet for this plant can be seen at river level just to the north of the Journey Behind the Falls observation platform

TORONTO POWER GENERATING STATION

- Located across from the Floral Showhouse
- Completed in 1906
- Built right into the riverbed
- Is three times deep as it is high
- Supplied electricity exclusively for the City of Toronto
- Ceased producing electricity in 1974

ONTARIO POWER GENERATING STATION

- Located across from the American Falls
- Built in 1904
- Visible from the observation platform at Journey Behind the Falls and from the Niagara City Cruises Boat
- The Illumination Tower in Queen Victoria Park was the surge tank for this power station



: CURRENT GENERATING STATIONS

Niagara Parks is home to two active power generating stations owned and operated by Ontario Power Generation (OPG).

SIR ADAM BECK GENERATING STATIONS 1 AND 2

- Located in Queenston
- Sir Adam Beck 1 built in 1917
- Sir Adam Beck 2 built in 1950
- As per the Niagara River Water Diversion Treaty, water that is diverted for hydroelectric power generating purposes is shared equally between Canada and the United States

NATURE AREAS

With 56 kilometres of preserved parkland along the Niagara River, there's an abundance of green space for Niagara Parks visitors to explore. From trekking the rugged hiking trails through the Niagara Glen to leisurely cycling along the Niagara River Recreation Trail, there are endless opportunities to reconnect with nature in Niagara Parks.

∴ DUFFERIN ISLANDS

- Created from rock excavated from the river for the construction of the Ontario Power Generating Station
- Named after Governor General Lord Dufferin, who encouraged the creation of a Niagara Parks system
- Trails through 11 islands connected by foot bridges
- Popular for picnics, bird watching and fishing

∴ RECREATIONAL TRAILS

- Paved path for non-motorized traffic stretching 53 kilometres (33 miles) along the Canadian side of the Niagara River
- Passes through Fort Erie, Niagara Falls and Niagara-on-the-Lake
- Suitable for walking, jogging, biking and wheelchairs
- Intersects with the Bruce Trail at Queenston Heights parking lot

∴ NIAGARA GLEN NATURE CENTRE

- Constructed in 1923 as the Niagara Glen Inn, a restaurant along the Great Gorge Railway
- Throughout its history, the centre was used as the caretaker's residence, temporary student residence, drive-in restaurant and Christmas shop
- Home of the Niagara Glen Nature Exchange where nature specimens can be exchanged for points towards other unique natural items based on rarity, condition and knowledge about the item; ethical collecting principles apply
- Also offers interpretive materials and a small gift shop
- Centre is equipped with a bike rack, bicycle fix-it station, water bottle filling station, and washrooms; accessible washroom also available
- Guided nature hikes available during the summer for a fee
- Open seasonally

∴ NIAGARA GLEN (“THE GORGE”)

- North of the Niagara Whirlpool
 - Created by the erosive power of the falls over 10,000 years ago
 - The age of the rock (limestone) down into the gorge ranges from 415 to 440 million years old and contains fossilized coral and other sea creatures
 - Large boulders are scattered throughout the Glen, the result of the riverbed and tablelands collapsing into the gorge as the river eroded south
 - Boulders are now used for climbing (bouldering); permits are available for a fee at the Niagara Glen Nature Centre and Butterfly Conservatory
 - Property was acquired by Niagara Parks in 1894
 - Home of the potholes, large holes naturally carved through boulders
 - Climbing of the gorge wall, campings and fires are prohibited
 - Used for hiking, picnicking, bird watching and observing unique plants and wildlife found within the Carolinian Forest Zone
 - Approximately four kilometres of marked rugged nature trails
 - Metered parking
-

VISITORS TO THIS AREA ARE ADVISED:

- Wear appropriate clothing and footwear
- Remain on the marked trails; watch for poison ivy
- Have a reliable means of communication
- Let someone know where you are going
- “Leave no trace” principles apply; take only photographs, leave only footprints
- Trails are rugged, have steep elevation changes and can be slippery
- The removal or damage of plants is strictly prohibited

HERITAGE SITES

The ribbon of land along the Niagara River has played host to several monumental moments in the history of Canada. Niagara Parks' heritage sites offer visitors an opportunity to immerse themselves in the Niagara region's rich history and discover a variety of hidden architectural gems.

: CHIPPAWA BATTLEFIELD PARK

- Located north of the Legends on Niagara golf course
- Honours the British and American soldiers that died during a battle that took place on July 5, 1814
- Visitors can do self-guided tours for free
- Open year-round
- Free parking and admission

: LAURA SECORD HOMESTEAD

- Heroine of the War of 1812; American soldiers occupied her home
- Laura Secord made a 32-kilometre (20 mile) journey through the American battle lines to warn the British forces of an imminent American attack
- Her warning helped the British and Allied forces win the Battle of Beaverdams in June 1813
- In 1913, the Laura Secord Chocolate Company was created to honour the 100th anniversary of her journey
- The Laura Secord Chocolate Company bought and restored the Laura Secord Homestead and transferred ownership to Niagara Parks
- Laura Secord has been recognized as "a person of national historic significance" by the Ministry of Canadian Heritage and ranked 35th of the Top 100 "Greatest Canadians"
- Today, guides in period costumes recount Laura Secord's story during tours of this site
- It has an interactive learning centre created with a charming village atmosphere that includes the Queenston Chapel
- Open June to September
- Free parking; nominal admission fee

∴ OLD FORT ERIE

- Located in Fort Erie, Ontario at the south end of Niagara Parks
- Scene of the bloodiest battles of the War of 1812
- United States occupied the fort twice
- Today, British military life is recreated by authentically dressed guards and interpreters who guide visitors through the fort and its museum
- The Welcome Centre features interactive and entertaining displays as well as a theatre
- The 'Siege of Fort Erie' takes place on the second weekend of August
- Open June to October
- Free parking; nominal admission fee

∴ MACKENZIE PRINTERY

- Canada's largest working print museum dedicated to the preservation of hot lead and letterpress equipment
- Former home of William Lyon Mackenzie, a newspaper editor and former mayor of the City of Toronto who led a failed rebellion in 1837
- Today, features a hands-on environment with a working Linotype and operating heritage press
- Open June to September
- Free parking; nominal admission fee

∴ MCFARLAND HOUSE & PARK

- Located in McFarland Point Park, south of Niagara-on-the-Lake
- Georgian-style home restored circa 1800
- Used as a hospital by British and American forces
- Features an old-fashioned herb garden
- Open June to September
- Metered parking; nominal admission fee
- Today, interpreters in costumes provide guided tours and serve tea and baked goods in the newly expanded tearoom

: QUEENSTON HEIGHTS PARK

- The site where British Major General Sir Isaac Brock was killed
- Paid parking
- Open June to September
- Brock's Monument is located at this park
- Owned and maintained by Parks Canada
- Parks Canada charges a small fee to enter/climb the monument
- Built in 1856
- 50 metres (164 feet) tall
- Observatory at the top is accessible via a spiral staircase
- Has tennis and pickleball courts, a concert shell, hiking trails, a baseball diamond and a restaurant

Queenston Heights Park is also the site of the Landscape of Nations Native Memorial, which was officially dedicated in the fall of 2016. The memorial pays tribute to the significant sacrifices and contributions made by First Nations during the War of 1812.



ATTRACTIONS

Niagara Parks attractions showcase some of Canada's most desired natural sights and travel destinations. Whether standing in awe under the roar of the falls or soaring over a rushing whirlpool, our iconic Canadian experiences offer visitors a thrilling, unforgettable adventure. Admission to Niagara Parks attractions can be purchased individually or as part of the Adventure or Wonder Pass packages available online, through travel agencies and consignment partners or at a Niagara Parks Welcome Centre.

: BUTTERFLY CONSERVATORY

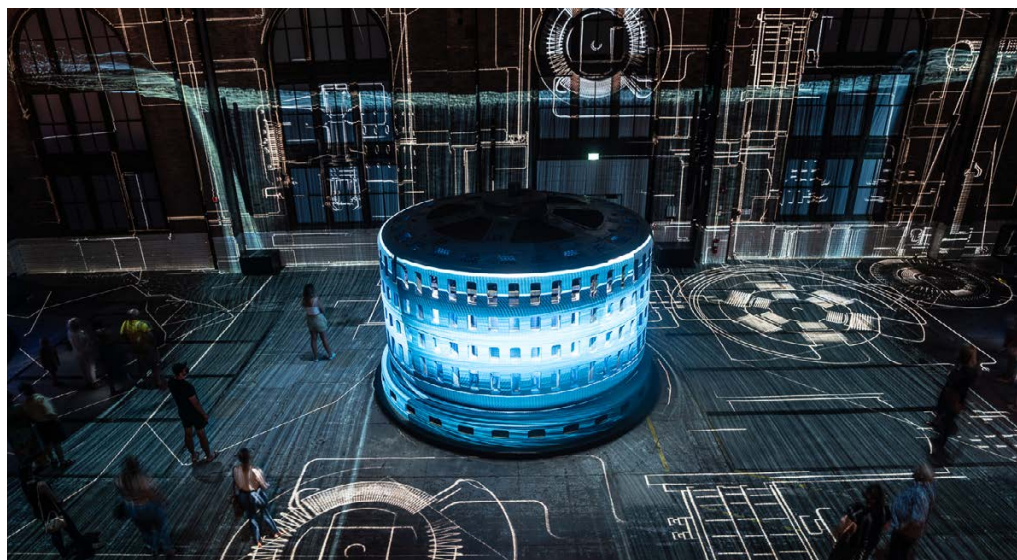
- Located north of the Niagara Glen on the grounds of the Botanical Gardens
- Opened in 1996
- The attraction starts with a short information video that is closed captioned for the hearing impaired
- Features a network of paths in a rainforest setting with exotic greenery, plants and a 20-foot waterfall
- Over 2,000 tropical butterflies made up of 45 different species fly freely throughout
- Newly emerged butterflies are released daily at 9:30 am
- Self-guided attraction; takes approximately 30 minutes to walk through
- Open year-round
- Parking and admission fees apply

: JOURNEY BEHIND THE FALLS

- Located at the brink of the Horseshoe Falls on the first floor of the Table Rock Centre
- Elevators take visitors down 38.1 metres (125 feet) to the tunnels leading to an observation deck and viewing portals
- The first tunnels were blasted in 1889 and visitors were escorted by guides carrying lanterns
- Originally called "Behind the Sheets" then changed to "Under the Falls," then "Scenic Tunnels"
- Visitors originally had to descend a spiral staircase to reach the tunnels
- In 1887, the staircase was replaced with a hydraulic lift
- In 1944, a new tunnel was constructed with concrete lining and electric lights
- In 1951, the observation deck was constructed
- Name changed to Journey Behind the Falls to more accurately describe the attraction
- Souvenir biodegradable raincoats provided
- Self-guided attraction; average time spent in the tunnels is 30 minutes
- Open year-round

∴ NIAGARA PARKS POWER STATION + TUNNEL

- Located at 7005 Niagara Parkway, Niagara Falls, Ontario, between Table Rock Welcome Centre and the Floral Showhouse
- Open daily for general admission and guided tours. Reopens nightly for Power Station at Night
- For over 100 years, the “Canadian Niagara Power Company Generating Station” harnessed the powerful energy of the Horseshoe Falls and turned it into an important source of electricity for communities in Western New York and Southern Ontario. See page 12 for more details
- The power station re-opened in 2021 after lying dormant for over 15 years. It is the only fully intact, decommissioned hydroelectric power station of its era in the world
- Features repurposed artifacts, interactive exhibits and interpretative installations
- The original equipment in the main generator hall was meticulously shined and restored to showcase the power generating technology built in the early 1900s
- The revolutionary works of inventors like Nikola Tesla, Thomas Edison and George Westinghouse are also highlighted
- A 2,200-foot (670-metre) tunnel extends beneath the power station, originally built to carry spent water from the generating turbines back into the Niagara River at the base of the Horseshoe Falls
- Visitors can descend 180 feet (55 metres) below the main generator hall to access the Tunnel in a glass-panelled elevator
- The Tunnel features immersive lighting effects, archival projections and interpretive storytelling that highlight Niagara’s engineering and power-generation history
- The experience concludes at an open-air observation platform at the base of the Horseshoe Falls, overlooking the illuminated falls
- Public access to the Tunnel opened in 2022 as part of the Niagara Parks Power Station’s redevelopment



∴ POWER STATION AT NIGHT

- Offers exclusive after-dark access to the Niagara Parks Power Station, including the underground Tunnel 180 feet beneath the main generator hall
- Features continuous screenings of Currents: Niagara's Power Transformed, a nighttime sound and light show
- Inside the Tunnel, LED lighting, projected images and immersive sound effects transport guests through 13,000 years of Niagara's geological and power-generating history
- Includes access to the outdoor observation platform at the river's edge
- Nighttime experience typically begins after regular daytime admission hours; last entry is one hour before closing (schedule varies seasonally)
- Guests can choose when to watch the light show and when to explore the hall and Tunnel at their own pace

∴ NIAGARA CITY CRUISES

- Located at the bottom of Clifton Hill
- Formerly known as the Maid of the Mist; Niagara City Cruises took over operations of the attraction in 2014
- 700 passenger catamaran-style boats
- View of the American, Bridal Veil and Canadian Horseshoe Falls
- Souvenir biodegradable raincoats provided
- Boats sail every 15 minutes
- Cruises last 20 minutes
- Open April/May until November/December
- Operating season depends upon weather conditions
- High wind/water levels may close the attraction unexpectedly

∴ NIAGARA TAKES FLIGHT

- Located inside Table Rock Centre at the brink of the Horseshoe Falls
- Opened in late summer 2025 as Ontario's first fully immersive flying theatre experience
- Features a 17-metre (55 foot) domed screen with motion-based seating, multi-sensory effects and high-impact visuals that simulate free flight over the Niagara River corridor across all four seasons
- Riders must be at least 3 ft. 4 in. (102 cm) tall to participate
- Captivating pre-show guides visitors through 13,000 years of Niagara's history across multiple themed rooms, including the Ancestors room, the Waterfall room and the Transporter room
- Approximately 30-minute experience from entry to exit (including pre-show and ride)
- Timed-ticketed entry is strongly recommended during peak visitation periods due to frequent sell-outs

∴ WHIRLPOOL AERO CAR

- An aero car suspended by six cables 76.2 metres (250 feet) above the Whirlpool Rapids
- Spans 539 metres (1,770 feet) between Colt's Point and Thompson Point both on the Canadian side
- Designed by Spanish engineer Leonardo Torres Quevedo
- Opened August 8, 1916
- Accommodates 35 standing passengers
- Crossing in both directions takes about ten minutes
- Open late spring to autumn; high winds may close the attraction unexpectedly
- Free parking

∴ WHIRLPOOL ADVENTURE COURSE

THREE COURSES

'CLASSIC'	'EXTREME'	KIDS COURSE
<ul style="list-style-type: none"> • Ages seven and up • Participants must weigh between 20 and 129 kilograms (44 to 285 pounds) • Minimum height from feet to reach above head is 180 cm (5' 11") • Takes approximately 60 to 90 minutes to complete • Signed waiver form required 	<ul style="list-style-type: none"> • Available as an add-on to the Classic course • Same weight and reach restrictions apply • Takes an additional 30 to 60 minutes to complete • Signed waiver form required 	<ul style="list-style-type: none"> • Ages five to 12 • A responsible adult must accompany participants • Minimum height from feet to reach above head is 140 cm (4' 7") • Takes approximately 45 to 90 minutes to complete • Parent/guardian signed waiver form required

- Operated by WildPlay Niagara
- Open seasonally; closes during thunderstorms and other hazardous weather conditions
- Paid parking is available and free for visitors of the Whirlpool Adventure Course

WILDPLAY'S WHAT'S TO FEAR JUMP

- Loose line leap from 40 feet
- Can be booked separately or as an add-on to the Classic and Extreme Courses
- Ages seven and up
- Participants must weigh between 20 and 129 kilograms (44 to 285 lbs)
- Signed waiver form required

∴ WHITE WATER WALK

- In 1876, the riverbank along the Whirlpool Rapids was leased to John Drew by the Ontario Government
- John Drew subleased it to Dr. W. H. Ferguson M.P. who developed the tourist potential and built a steam-powered incline railway to transport visitors from street-level to the river's edge
- In 1935, Niagara Parks entered into an agreement with Robertson Construction & Engineering Company of Niagara Falls to lease the lands formerly occupied by the incline railway and boardwalk along the rapids for 30 years
- Originally called the "Great Gorge Adventure"
- Lease extended for three more years until Niagara Parks took over in 1967
- An elevator takes visitors down 70 metres (230 feet) to an observation area with a 300-metre (1,000 foot) boardwalk along the Class 6 rapids in the lower gorge
- Visitors can see the layers of rock on the steep walls that show the geological history of the falls as they eroded through the gorge over 10,000 years ago
- Entertaining and educational information is displayed on signs throughout the attraction
- Open late spring to November; varies according to weather conditions
- Free parking for White Water Walk visitors only

∴ ZIPLINE TO THE FALLS

- Located at the Grand View Marketplace
- Four parallel ziplines, 670 metres (2,200 feet) in length
- Ages seven and up
- Participants must weigh between 29 and 115 kilograms (65 to 300 pounds)
- Signed waiver form required
- Guided from check-in to Grand View observation tower/launch platform
- Once at the bottom, accessible shuttle vans transport visitors back to the top
- The zipline itself takes about 60 seconds and reaches 60 km/h
- The entire experience from check-in to drop-off at the top is about one hour
- Operated by WildPlay Niagara Falls
- Open seasonally; closes during thunderstorms and other hazardous weather conditions

GARDENS

Niagara Parks' sprawling parkland and manicured gardens give visitors an opportunity to discover world-famous rose collections, spectacular flowering trees and shrubs, annual baskets in full bloom and much more. From the historic Queen Victoria Park and Botanical Gardens to the Niagara Glen's peaceful winding trails, Niagara Parks' green spaces offer an abundance of natural beauty that guests of all ages and varying interests can enjoy.

∴ BOTANICAL GARDENS

- Located north of the Niagara Glen on 40 hectares (100 acres) of land
- Diverse collection of formal and informal gardens
- Features a variety of annuals, perennials, bulbs, trees shrubs and a collection of roses
- Open year-round from dawn to dusk
- Free admission and paid parking

SCHOOL OF HORTICULTURE

- Established in 1936
- Located north of the Niagara Glen
- Alternative horticulture education program
- Students maintain the grounds of the Botanical Gardens as part of their curriculum
- Legacy Garden pays tribute to graduates and past and present members of the Ontario Parks Association

∴ CENTENNIAL LILAC GARDEN

- Created in 1967 to commemorate Canada's Centennial
- Located north of the Floral Clock
- Features 1,200 plants of over 200 varieties
- The Rotary clubs of New York state donated the trees when the garden was established
- Free admission and parking
- Best experienced in May and early June

∴ FLORAL CLOCK

- Built in 1950
- Largest in the world measuring 12 metres (40 feet) in diameter
- The clock's face is filled with 15,000 to 18,000 small plants in elaborate designs which change twice each year
- Also features a wishing pond and tower with Westminster chimes that sound every quarter hour
- Free admission and parking

∴ FLORAL SHOWHOUSE

- Originally built in 1894; reconstructed in 1945 and a visitor centre was added in 1980
- Located just north of Dufferin Islands
- Floral displays are changed eight times each year coinciding with seasons and holidays
- Features a collection of orchids, succulents and other tropical plant species
- Also houses the Titan Arum - the world's tallest flower
- An outdoor rose and fragrance garden features signs in braille
- Open year-round; closed December 25
- Paid admission and parking

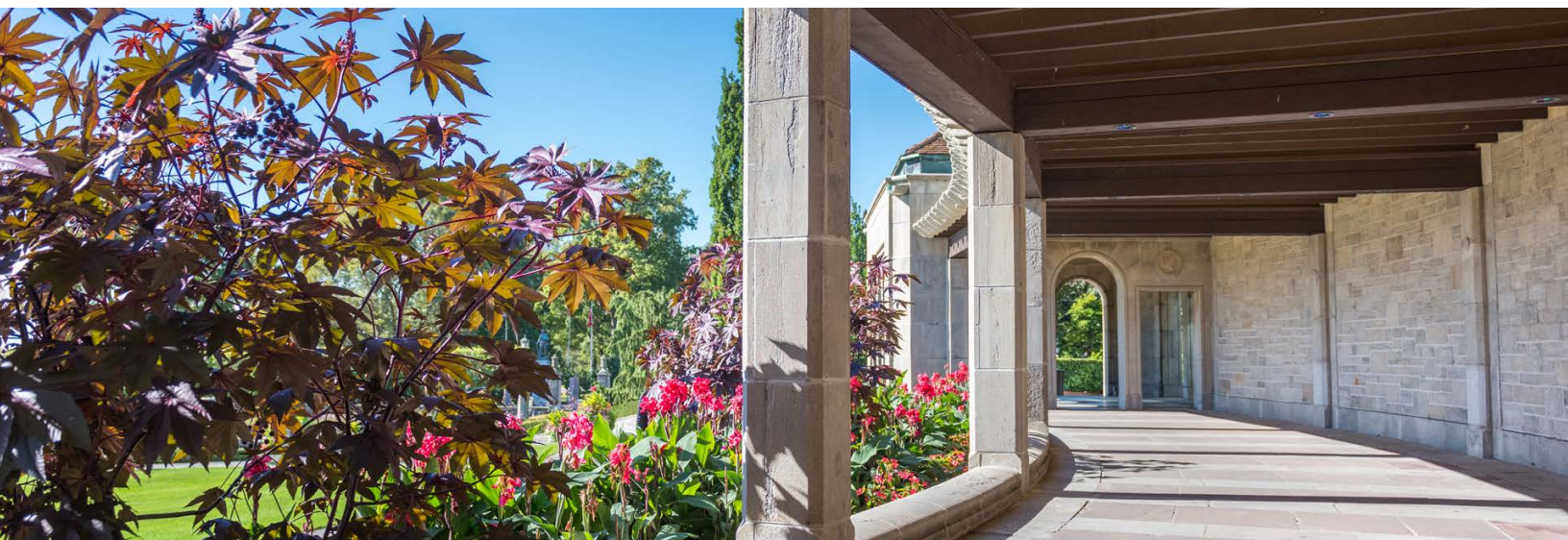


: OAKES GARDEN THEATRE

- Located at the bottom of Clifton Hill; former site of the Clifton Hotel which was destroyed by fire
- Opened in 1938
- Named after Sir Harry Oaks who donated the property
- Curved pergola overlooks a central amphitheater
- Rock gardens, lily ponds and shrub borders adorn the theatre along with iron gates and Queenston limestone around the perimeter
- Open year-round
- Limited metered parking

: QUEEN VICTORIA PARK

- Encompasses the area from Dufferin Islands in the south to Clifton Hill in the north
- Named after the reigning British monarch at the time the park was established
- North entrance marked by the Mowat Gate at the intersection of Falls Avenue and Clifton Hill
- Mowat Gate named for Sir Oliver Mowat, a former premier of the province of Ontario and one of the Fathers of Confederation who advocated for the establishment of the Niagara Parks



TRANSPORTATION

Transportation within Niagara Parks and around the tourist areas of Niagara Falls is made simple for visitors with a number of available options. From the fully accessible WEGO bus system to special shuttles providing access to Niagara-on-the-Lake, visitors can explore all that Niagara Parks has to offer and leave the driving to us!

∴ PARKING

There are a number of small, free parking locations in the north and south end of Niagara Parks. Major parking lots in Niagara Parks are either gated or metered with daily parking passes available that allow re-entry at almost all lots during one calendar day. Overnight parking is not available at any Niagara Parks lot.

DAILY RATE	HOURLY; PAY-AND-DISPLAY METERED PARKING	PARKING PASSES
<ul style="list-style-type: none"> • Falls parking lot; next to Table Rock Centre at the brink of the Horseshoe Falls • Rapidsview parking lot; just south of Dufferin Islands Parking fee includes free shuttle service to and from Table Rock Centre • Queen Victoria Park; located at the bottom of Murray Hill • Kingsbridge Park (summer months only) • Butterfly Conservatory 	<ul style="list-style-type: none"> • Floral Showhouse parking lot • Police Loop; located at the Niagara Parks Police Station in Queen Victoria Park • Across from Falls Ave. • Rainbow Bridge parking lot; north of the Rainbow Bridge • White Water Walk • McFarland House; free parking for attraction visitors • Thompson Point; opposite Whirlpool Golf Course • School of Horticulture; opposite the Butterfly Conservatory • Niagara Glen 	<ul style="list-style-type: none"> • Daily parking passes are available for purchase at attendant and metered parking lots • Annual parking passes are available for purchase online and in person for an additional cost • Passes are valid for two vehicles and at all parking lots, except the Police Loop and Clifton Gate pay-and-display lots

∴ WEGO

- WEGO replaced the Peoplemover system which began operating in 1985
- BLUE & ORANGE lines are operated by Niagara Parks and all other lines are operated by the City of Niagara Falls
- GREEN line transports visitors via the Niagara Parkway to most Niagara Parks attractions, and connects to the main Niagara Falls bus and train station
- BLUE line connects Table Rock Centre to the casino and hotel areas in Niagara Falls as well as the convention centre; a stop at Marineland is included during the summer months
- Fully accessible and are equipped with bike racks to carry two bicycles
- Operates year-round, except December 25
- No single ride fare; option of 1-Day (24 Hour) and 2-Day (48 Hour) passes
- An hourly shuttle service is available between Queenston and Niagara-on-the-Lake which operates from April to late October

∴ FALLS INCLINE RAILWAY

- Connects the Fallsview tourist area to Table Rock Centre
- Carries a maximum of 40 passengers each trip
- Fully accessible and climate-controlled
- Operates year-round; extreme weather may cause unexpected closures

DINING IN NIAGARA PARKS

∴ FULL SERVICE

Niagara Parks offers five, full-service, Feast ON certified restaurants on the Niagara Parkway. Since 2014, our Feast On certification has distinguished Niagara Parks' restaurants as champions of Ontario food and drink. We source 25 to 50 per cent of our food product and over 90 per cent of our beverages from Ontario.

TABLE ROCK HOUSE RESTAURANT

- Located on the second floor of the Table Rock Centre, steps from the brink of the Horseshoe Falls
- Operates year-round

QUEEN VICTORIA PLACE RESTAURANT

- Located at the bottom of Murray Hill
- Operates seasonally from spring to fall

QUEENSTON HEIGHTS RESTAURANT

- Located 15 minutes north of the falls at the foot of Brock's Monument
- Operates seasonally from spring to fall

LEGENDS ON THE NIAGARA RESTAURANT

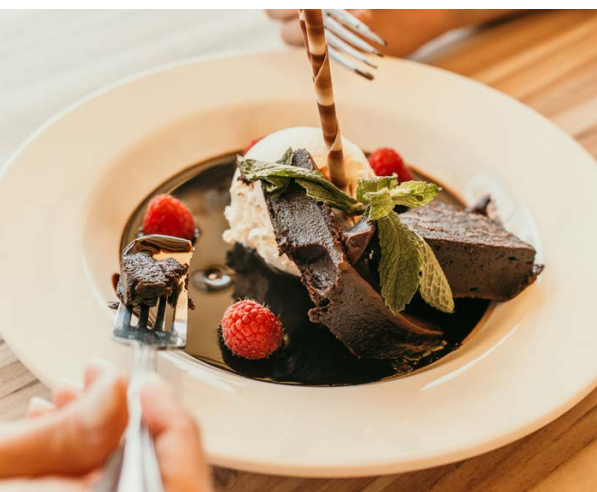
- Located on the grounds of the Legends on the Niagara Golf Course south of Chippawa
- Operates seasonally from spring to fall

WHIRLPOOL PUB + LOUNGE

- Located on the grounds of the Whirlpool Golf Course north of the Whirlpool Aero Car
- Operates seasonally from spring to fall; available for bookings in the off-season by request

TABLE ROCK BISTRO + WINE BAR

- Located on the second floor of Table Rock Centre
- Operates year-round with special hours during holidays and weekends



: QUICK SERVICE (FAST FOOD)

GARDEN CAFÉ

- Operates seasonally from spring to fall

AERO CAR CAFÉ

- Operates seasonally from spring to fall

GRANDVIEW MARKETPLACE

- Operates seasonally from spring to fall

TABLE ROCK MARKET

- Open year-round; closed December 25

QUEEN VICTORIA PLACE CAFÉ

- Tim Hortons; operates seasonally from spring to fall

: PICNICKING

Visitors will find several parkettes and scenic lookouts close to parking, benches and picnic tables along the entire length of the Niagara River.

- Covered picnic pavilions are available at five locations: McFarland Point Park, Queenston Heights Park, Niagara Glen, Kingsbridge Park and Old Fort Erie
- Groups may reserve these areas for a nominal permit fee



NIAGARA PARKS GOLF

Niagara Parks offers three championship golf courses catering to golfers of all skill levels. The impressive Legends on the Niagara complex boasts two courses; Battlefield & Ussher's Creek. Just a few minutes away, the historic Whirlpool Golf Course pairs its challenging but fair design with a spectacular setting against the backdrop of the Niagara Whirlpool and Gorge.

: LEGENDS ON THE NIAGARA

- Located south of the Chippawa Battlefield Park
- Two 18-hole golf courses
- Battlefield
- Ussher's Creek
- 360° driving range
- State-of-the-art training academy
- Nine-hole short course

: WHIRLPOOL GOLF COURSE

- Located approximately ten minutes north of the falls
- Opened in 1951

: OAK HALL PAR 3

- Located on the grounds of the historic Oak Hall estate, the former home of Canadian mining millionaire Sir Harry Oakes
- Ideal for beginners and families with time constraints
- Nine-hole short course



NIAGARA PARKS ENTERTAINMENT

Niagara Parks plays host to a number of free, fun, family-oriented entertainment events throughout the year.

: FIREWORKS AND FALLS ILLUMINATION

- The Horseshoe and American Falls are illuminated with vibrant LED lighting displays in a full spectrum of colours
- Illumination times vary seasonally and generally run from dusk into the late evening; special colours and holiday themes are added throughout the year
- The Falls Illumination Board oversees nightly displays and provides special colour illuminations for charitable and non-profit organizations upon request
- Niagara Parks hosts Canada's longest-running fireworks series, with seasonal and special-event shows launched from within the Niagara Gorge
- Fireworks are typically presented on weekends and holidays, with extended nightly shows during major events such as the Winter Festival of Lights
- Fireworks displays are weather-dependent and may be cancelled if winds or conditions compromise safety; updates are shared through Niagara Parks' social channels
- Viewing is free along all major public areas of Niagara Parks

: WINTER FESTIVAL OF LIGHTS

- Presented by the Ontario Power Generation on Niagara Parks grounds
- Founded in 1982; Canada's largest illumination festival attracting over 1.8 million visitors annually
- Features light displays placed throughout Dufferin Islands, Queen Victoria Park and surrounding tourist districts
- Runs from early November through the end of January

ACCESSIBILITY AT NIAGARA PARKS

Niagara Parks strives to provide experiences and services in a way that respects the dignity and independence of persons with disabilities. While most of our buildings and attractions are accessible, some areas still need to be upgraded. We are continuously making improvements to remove barriers and increase accessibility to ensure all visitors have a comfortable and enjoyable experience at Niagara Parks.

: PARKING

- Accessible parking is available at all Niagara Parks attractions and restaurants
- Accessible parking permit holders can re-park on the same day for free at any Niagara Parks paid lot by showing an original parking receipt on their dash

: ADMISSION FEES

- Where full accessibility of a building/attraction is not possible, discounted admission is provided; this discount cannot be applied to Adventure or Wonder Pass packages

: WHEELCHAIRS

- Limited rentals available on a first-come, first served basis at Table Rock Centre, Floral Showhouse, Old Fort Erie and the Butterfly Conservatory
- A valid credit card is required to rent a wheelchair

: SERVICE ANIMALS

- Service animals are allowed everywhere in Niagara Parks, except in areas where it is prohibited by law (i.e., in a public kitchen)

: SUPPORT PERSONS

- Admission fees and fares are waived at all Niagara Parks attractions for accessibility support persons if they are accompanying a person with a disability

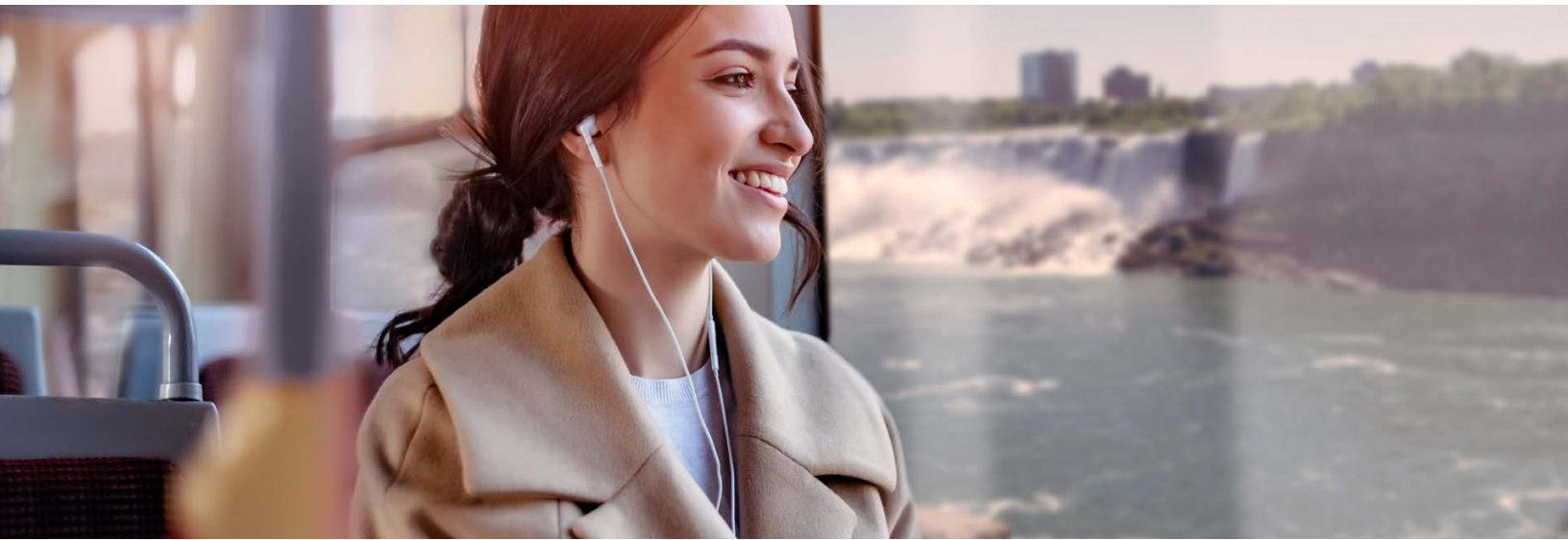
TOUR GUIDES, TOUR VEHICLES & GROUP TOURS

: TOUR GUIDES

- Section 11 (1) of the Niagara Parks Act states: “No person shall guide visitors through the Parks for compensation without a guide licence from the Commission.”
- Someone who is only accompanying a group to an attraction, restaurant or gift shop does not require a license provided they are not giving out purported factual information about the falls or Niagara Parks

: TOUR VEHICLES

- Section 12 (1) of the Niagara Parks Act states: “No person shall operate or be permitted to operate within the Parks any sight-seeing vehicle without a sight-seeing vehicle licence from the Commission.”
- Commercial sight-seeing vehicles can take the form of any type of vehicle from a two-passenger sedan to a 50+ passenger highway coach
- If passengers are paying for the services of a driver and vehicle, it is considered a commercial vehicle and a permit must be purchased upon arrival within the parks
- Parking for tour vehicles is available at the Rapidsview motor coach parking
- Parking at the Table Rock and Grand View bus management areas is generally prohibited during the summer months; however, an on-site supervisor may allow parking at these locations at their discretion
- If there are circumstances which require parking at these locations, drivers/guides must speak with an on-site supervisor who may evaluate and permit such requests



: AMBASSADOR SERVICES

- For tour guides who are also drivers, the bus management locations at Table Rock and Grand View Marketplace have ambassadors available to guide passengers from the tour vehicle to attraction check-in points during the summer months
- There is a small service fee charged to the bus/tour company for this service
- The availability of this service is subject to staff availability at each location and varies throughout the season and business day
- This guide service is available at Niagara's Fury, Journey Behind the Falls and Niagara City Cruises

: SPARE THE AIR

- Niagara Parks together with regional partners promote a voluntary program called 'Spare the Air'
- The goal is to reduce noise and air pollution caused by vehicles idling unnecessarily
- As part of the program, operators are asked to be considerate of other visitors within the park by turning off their tour vehicles as passengers load and unload

FAMOUS VISITORS, VIPS & DIGNITARIES

Niagara Parks sees millions of visitors each year and hosts many foreign and domestic dignitaries and notable guests. On occasion, well known celebrities visit Niagara Parks – sometimes without being recognized!

STARGAZING (CELEBRITIES)

- Brad Pitt
- Hugh Jackman
- Katy Perry
- One Direction
- Adam Sandler
- Regis Philbin
- Kathie Lee Gifford
- Kelly Ripa
- Ryan Seacrest

POLITICAL DIGNITARIES

- Princess Diana and sons William and Harry (1991)
- Former U.S president Jimmy Carter and former first lady Rosalyn Carter (1996)
- Former Canadian prime minister Pierre Elliot Trudeau (1996)
- Former president Hu Jintao of China (2005)
- Former prime minister Junichiro Koizumi of Japan (2006)
- David C. Onley, former lieutenant-governor of Ontario (2012)
- David Johnston, former Governor General of Canada (2012)
- Ban Ki-moon, former secretary general of the United Nations (2015)

EMERGENCY SERVICES

Niagara Parks staff are trained in emergency response policies and procedures, including how to communicate emergency information, offer evacuation assistance to visitors and identify accessible and safe evacuation routes. In the event of an emergency, always dial 9-1-1. To contact the Niagara Parks Police for non-emergency services, please call 1.905.356.1338.

∴ NIAGARA PARKS POLICE

- Stationed in Queen Victoria Park, opposite the American Falls
- One of the oldest police services in Ontario; established in 1887
- Serves as the lost and found for Niagara Parks
- Operates like any other police service with several units and divisions:
- K-9 Unit
- HART (High-Angle Rescue Team)
- Marine Unit

∴ FIRST AID & EMERGENCY MEDICAL RESPONSE

- A first aid station is located at Table Rock Centre, open seasonally from May to October
- Most buildings have a first aid kit and first aid, CPR and AED certified staff
- Trained and certified staff include:
- Horticultural and groundskeeping staff
- Road maintenance crews
- WEGO bus drivers
- Most supervisors
- Niagara Emergency Medical Services provide a rapid-response service using paramedics on bicycle (bike medics) during the summer months; bike medics are active on-duty paramedics with the same training and certifications as paramedics who respond by traditional ambulance
- Bike medic service covers Niagara Parks areas from Dufferin Islands in the south to the Rainbow Bridge in the north and up into the Clifton Hill area; these are places a traditional ambulance response may be delayed severely due to dense vehicle and pedestrian traffic
- In serious cases, emergency dispatch centres will send police and fire services to the scene
- Police and fire service members are trained and certified to provide basic medical care until bike medics and/or a traditional ambulance can arrive to continue care and transport, if needed
- AEDs with trained and certified staff are located in the following areas:
- Legends on the Niagara Golf Course
- Botanical Gardens and Butterfly Conservatory
- Table Rock Centre
- Grand View Marketplace
- Whirlpool Golf Course